

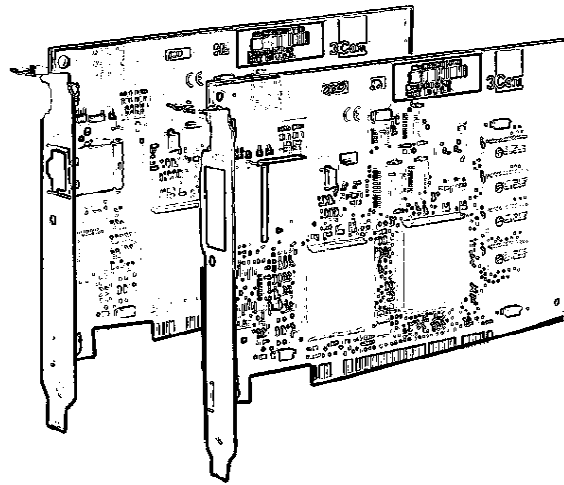


ATMLink

ATM Network Interface Cards

Delivering performance and high availability with standards-based ATM connectivity for servers and high-performance workstations.

The ATMLink PCI 155 network interface cards provide high performance, ease of use, and configuration flexibility for today's servers and high-performance workstations. 3Com's unique Resilient Server Link (RSL) architecture provides unmatched redundancy at the edge of the ATM network.



ATMLink™ PCI 155 network interface cards (NICs) support DynamicAccess™ features such as Resilient Server Link (RSL) that enable “standby” NICs to take over following a primary NIC connection failure. Combined with “dual homing,” RSL allows ATMLink PCI 155 NICs to connect to different switches for additional redundancy, ensuring the server remains available even if one of the attached switches fails.

ATMLink PCI 155 NICs support ATM Forum LAN Emulation (LANE), providing standards-based compatibility for legacy LANs as they migrate to ATM.

Ideal for servers, the ATMLink PCI 155 NICs include Ethernet and Token Ring LAN Emulation, traffic shaping, and 16 LAN Emulation Clients (LEC) per card, with a total of four cards and 64 emulated LANs (ELANs) per system.

Key Benefits:

- **Availability.** ATMLink PCI 155 NICs feature 4,096 open Virtual Connections (VC), RSL redundancy for maximum uptime, and dual homing for connections to multiple switches.
- **Management.** SNMP LEC MIB allows for management via Transcend® software; traffic shaping on a per ELAN basis offers more efficient network designs.
- **Flexibility.** Offering Ethernet and Token Ring LANE in the same system, the NICs support up to 64 ELANs per system, configurable VPI/VCI range, configurable ILMI VPI/VCI, and configurable number of standby RSL NICs.
- **Standards Compliant.** The NICs conform to UNI 3.0/3.1 signaling, ILMI specifications, and ATM Forum LANE 1.0 for interoperability between legacy LANs and ATM systems.
- **Performance.** Hardware-based Segmentation and Reassembly (SAR) and AAL5 provide optimal efficiency and throughput.
- **Ease of Use.** Simplified installation and configuration procedures make the ATMLink PCI 155 NIC very easy to install. ATMLink utilities show NICs, ELANs, connection information, and statistics.





3Com Corporation

P.O. Box 58145
5400 Bayfront Plaza
Santa Clara, CA 95052-8145
Phone: 800-NET-3Com
or 408-764-5000
Fax: 408-764-5001
World Wide Web:
<http://www.3com.com>

3Com ANZA

Sydney, Australia: 61 2 9937 5000
Melbourne, Australia: 61 3 9866 8027
New Zealand: 64 9 366 9138

3Com Asia Limited

Beijing, China: 86 10 68492 568
Shanghai, China: 86 21 6374 0220
Ext. 6115
Hong Kong: 852 2501 1111
India: 91 11 644 3974
Indonesia: 62 21 523 9181
Korea: 82 2 319 4711
Malaysia: 60 3 732 7910
Philippines: 632 892 4476
Singapore: 65 538 9368
Taiwan: 886 2 377 5850
Thailand: 662 231 8151 4

3Com Benelux B.V.

Belgium: 32 725 0202
Netherlands: 31 30 6029700

3Com Canada

Calgary: 403 265 3266
Montreal: 514 683 3266
Ottawa: 613 566 7055
Toronto: 416 498 3266
Vancouver: 604 434 3266

3Com European HQ

49 89 627320

3Com France

33 1 69 86 68 00

3Com GmbH

Austria: 43 1 5134323
Czech and Slovak Republics:
42 2 21845 800
Berlin, Germany: 49 30 3498790
Munich, Germany: 49 89 627320
Hungary: 36 1 250 83 41
Poland: 48 22 6451351
Switzerland: 41 31 996 14 14

3Com Ireland

353 1 820 7077

3Com Japan

81 3 3345 7251

3Com Latin America

U.S. Headquarters: 408 764-6075

3Com Northern Latin America

Miami, Florida: 305-261-3266

Argentina: 54 1 312 3266

Brazil: 55 11 546 0869

Chile: 56 2 633 9242

Colombia: 57 1 629 4110

Mexico: 52 5 520 7841

Peru: 51 1 221 5399

Venezuela: 58 2 953 8122

3Com Mediterraneo

Milan, Italy: 39 2 253011

Rome, Italy: 39 6 5279941

Spain: 34 1 383 17 00

3Com Middle East

971 4 349049

3Com Nordic AB

Denmark: 45 39 27 85 00

Finland: 358 0 435 420 67

Norway: 47 22 18 40 03

Sweden: 46 8 632 56 00

3Com Russia

007 095 2580940

3Com South Africa

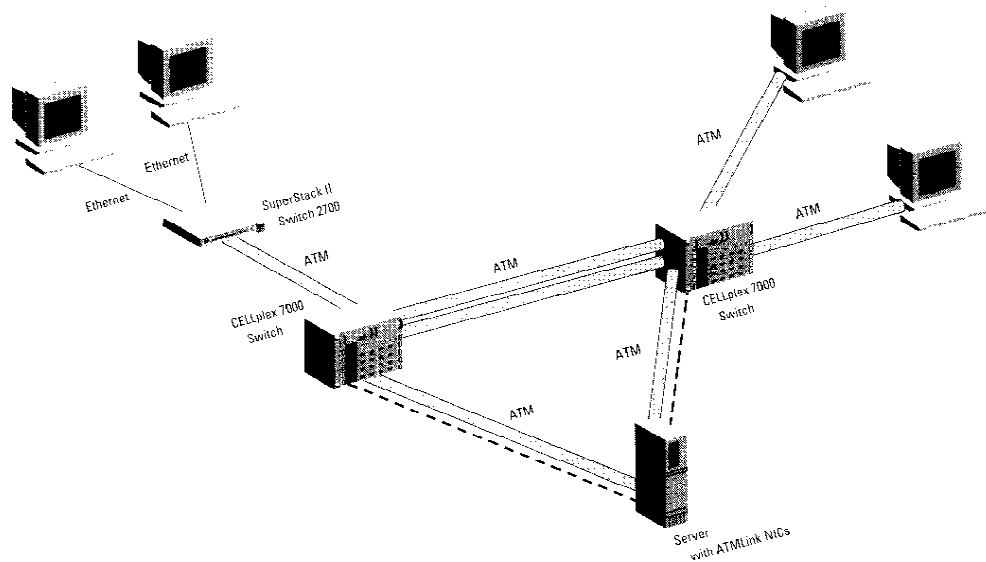
27 11 807 4397

3Com UK Ltd.

Edinburgh: 0131 247 8558

Manchester: 44 1618 737717

Marlow: 44 1628 897000



ATMLink PCI 155 NICs with the DynamicAccess feature RSL allow you to configure your ATM network with maximum flexibility and redundancy. Here a server is configured with four ATMLink PCI 155 NICs, two to each CELLplex 7000 switch. If one part of the primary connection fails, a

standby NIC will activate using the primary NIC's profile and connections even if the standby NICs are connected to a different switch. RSL allows complete flexibility in configuring active and standby NICs, from four active to one active and three standby for maximum redundancy.

Specifications

ATMLink ATM Network Interface Cards

Compatibility

Software

ATMLink PCI 155 NIC ships with:
NetWare 3.12 and 4.X
Windows NT 3.51 and 4.0
DOS Diagnostics
16 LECs per NIC

Four NICs per server

UNI 3.0 and 3.1

ILMI (with configurable VPI/VCI)

Configurable VPI/VCI range

DynamicAccess feature, RSL

Traffic shaping per ELAN

(1 to 155 Mbps)

SNMP MIB (Windows NT only)

Hardware

PCI 2.0-compatible computers

Connectors and Operating Distances

3C975-Fiber—Duplex SC connector supports network segments up to 1.2 mi/2.0 km over 62.5/125 multimode fiber
3C975-UTP—RJ-45 connector (female): Category 5 UTP on two pairs up to 328 ft/100 m

Random Access Memory

128 KB on board

LEDs

Single LED reports link status

Physical Dimensions

Length: 6.150 in. (15.62 cm)

Width: 4.2 in. (10.67 cm)

Power Requirements

10 W (1.5 A @ 5 V, .02 A @ 12 V)

Safety and Electromagnetic Compatibility

The ATMLink PCI 155-Fiber card meets the requirements of FCC Part 15, Subpart J Class B

The ATMLink PCI 155-UTP card meets the requirements of FCC Part 15, Subpart J Class A

Ordering Information

ATMLink PCI 155-Fiber network interface card 3C975-Fiber

ATMLink PCI 155-UTP network interface card 3C975-UTP

Warranty Summary

3Com provides a lifetime warranty for its ATMLink PCI 155 NICs. Refer to the warranty statement in the product manual for details.

To learn more about 3Com products, visit our World Wide Web site at <http://www.3com.com>.

©3Com Corporation 1997. All rights reserved. 3Com is a publicly traded corporation (NASDAQ:COMS). 3Com and Transoand are registered trademarks, and ATMLink, CELLplex, DynamicAccess, and SuperStack are trademarks of 3Com Corporation. Unless otherwise indicated, 3Com registered trademarks are registered in the United States and may or may not be registered in other countries. Windows NT is a trademark of Microsoft. NetWare is a trademark of Novell. Other brand and product names may be trademarks or registered trademarks of their respective owners. All specifications are subject to change without notice.